

SECRETS AND HIDDEN STUFF

SPOILER ALERT!!!!!!!!!!

All the rings locations

All the full Heart Containers

All the Heart Pieces locations

Belts (aka bottles)

Secret items and upgrades

Secrets and Easter Eggs

Lost Woods and Lost Beach pathways

All endings

All the rings locations:

There are 20 rings

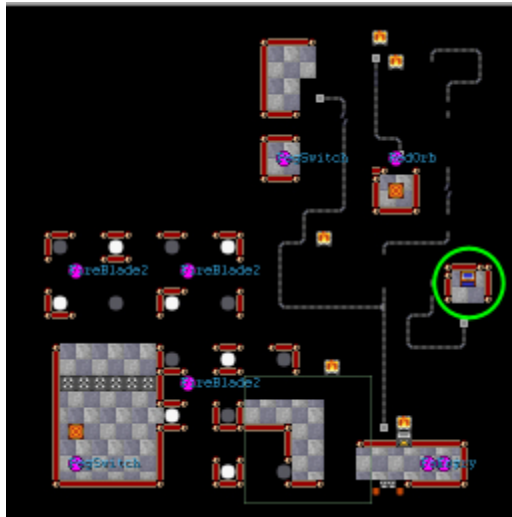
9 Human Rings of Courage from dungeon bosses

3 Elven Rings of Wisdom from Triforce Shrine

7 Dwarf Rings of Force hidden

1 The One Ring in space dungeon (aka magic cape)

The *hidden 7 Dwarf Rings of Force* locations:



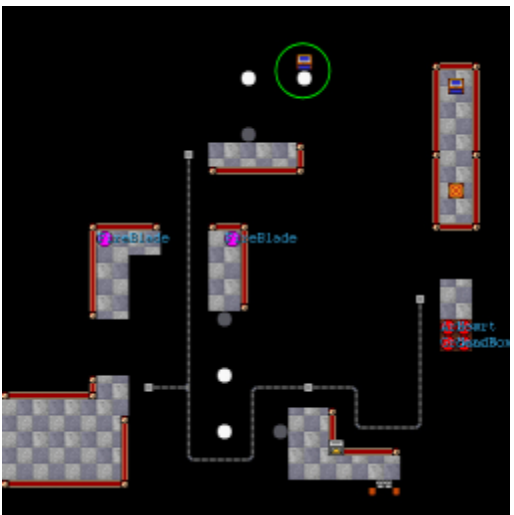
Room 192 - Tardis #1



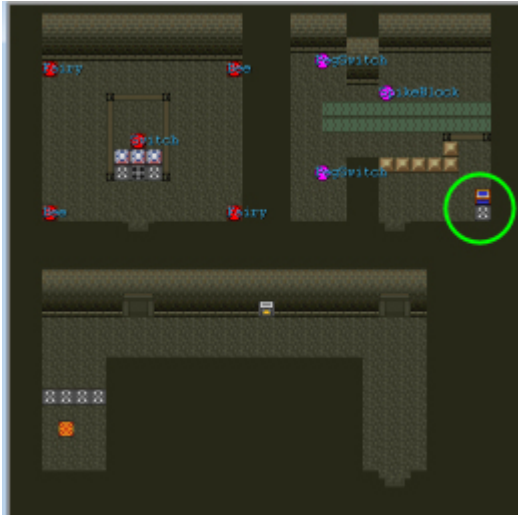
Room 147 - Tardis #2



Room 193 - Tardis #3



Room 146 - Tardis #4



Room 230 - Erock's Folder (Dev's Hideout) #5



Aghanim #6 (defeat the 3 Aghanim Superboss in Developer area (flute point 8, SePH's Computer) after collecting all keys and your tail to walk through spikes)



Ganon #7 Beat Ganon until he jumps and thus opens the holes, then fall down.

All the full Heart Containers :

FULL HEART CONTAINERS: (YOU START THE GAME WITH **FIVE** FULL HEARTS)

=====



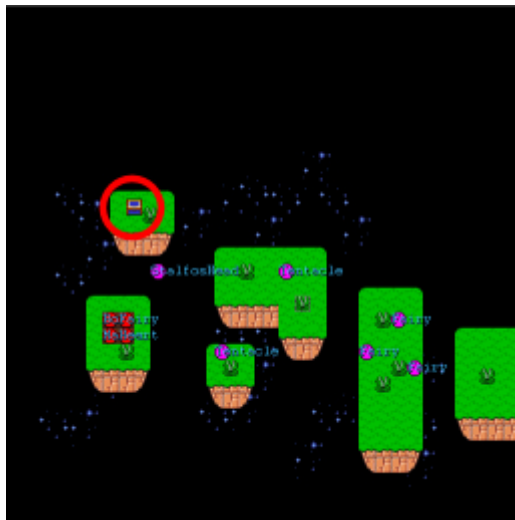
06- Room 55 (Spencer Estate)



07- Room 92 (Jedi Academy)



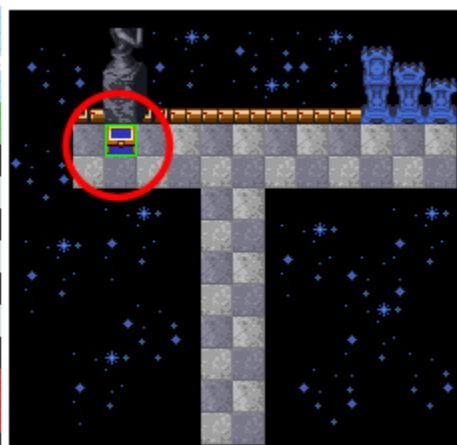
08- Room 112 (Garden of Eden)



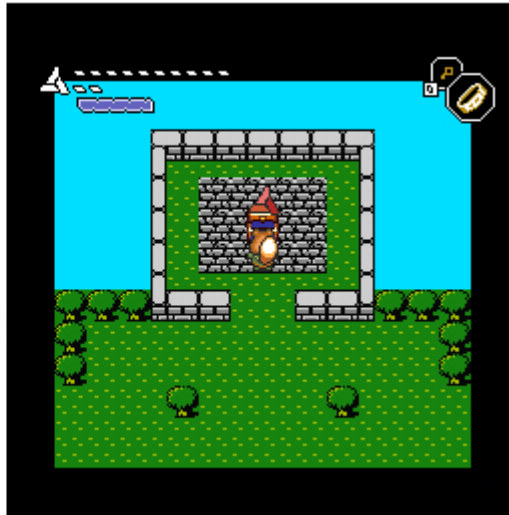
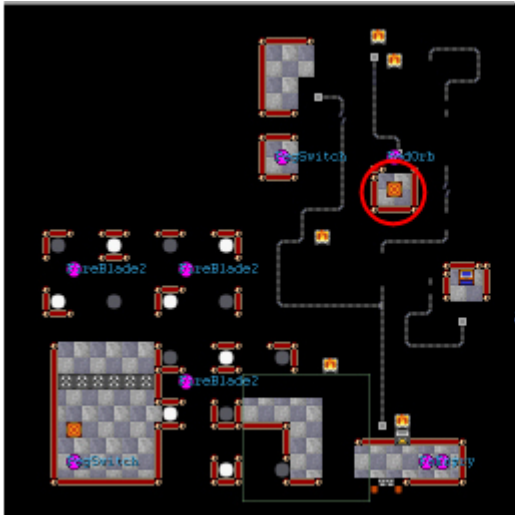
09- Room 156 (Retro Land)



10- Room 5 (Clocktower, come back when you have your own tail to walk through spikes)



11- Room 288 (Bo-Omb Painting, use Superbomb to open, the chest is hidden below the statue)

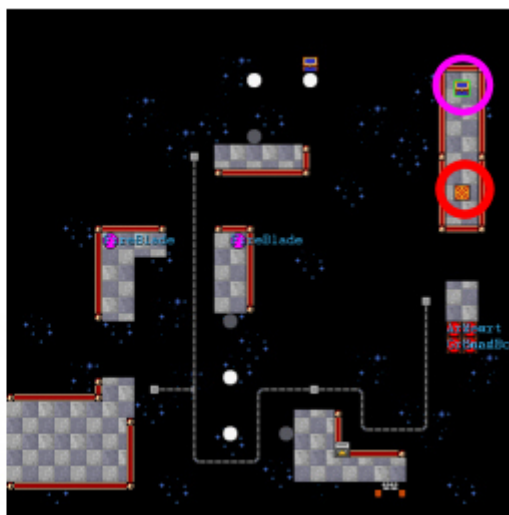
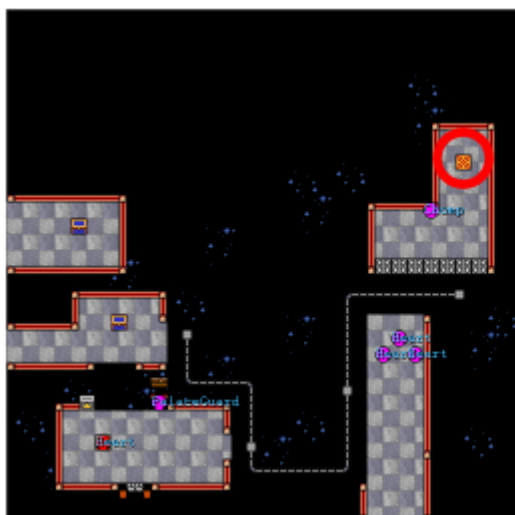


12- Room 176 (Heart of The TARDIS, use the teleporter in room 192 (shown in left image))



13- Room 120 (use the golden scale to dive through the whirlpool, use the stargate and solve the puzzle inside)

All the Heart Pieces locations :



14- Room 146 (Heart of the TARDIS, use teleporter in room 131 (that room with the doctor))



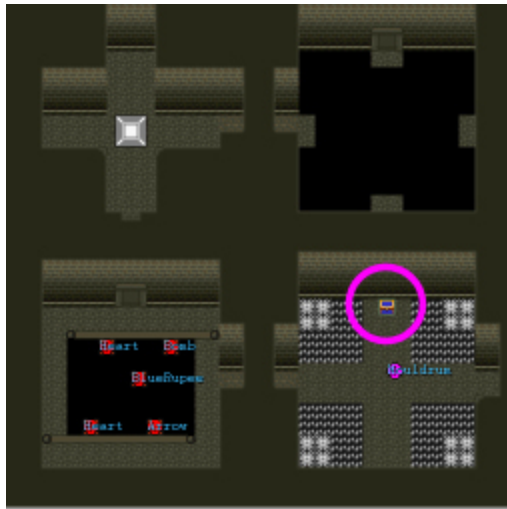
15- Room 180 (Parallel Tower Ruins, bottom right corner)



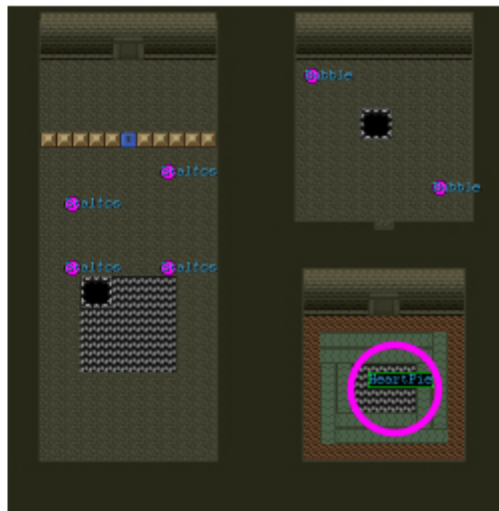
15- Room 181 (Parallel Tower Ruins) - be fast, best is you use the harp to see the platforms.



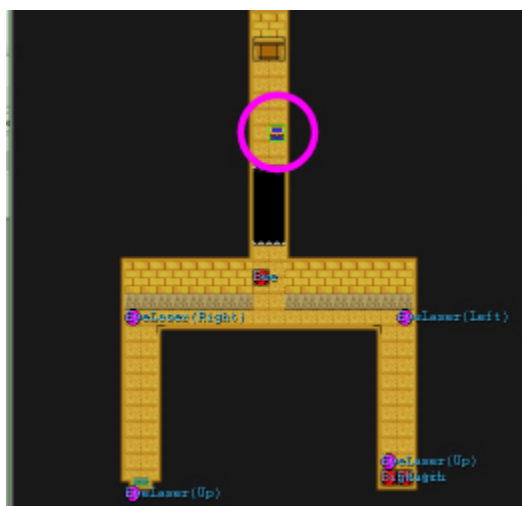
15- Room 195 (Parallel Tower Ruins)



15- Room 196 (Parallel Tower Ruins, after defeating Moldrum)



16- Room 211 (Parallel Tower Ruins) - Trick: use the feather to fall into the left side of the hole!



16- Room 249 (Triforce Shrine)



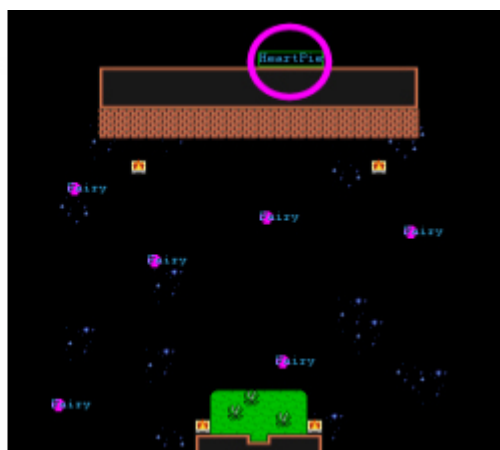
16- Room 53 (Spencer Estate)



16- room 257 (Space Hub)



17- Room 184 (Retro Land, fall into this hole)





17- Area 2B (Peach Castle: Outside)



17- Area 06 (Peach Castle: Heaven)



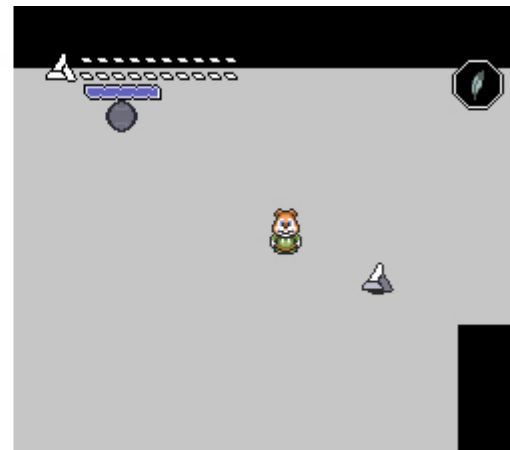
17- Area 2F (Triforce Shrine)



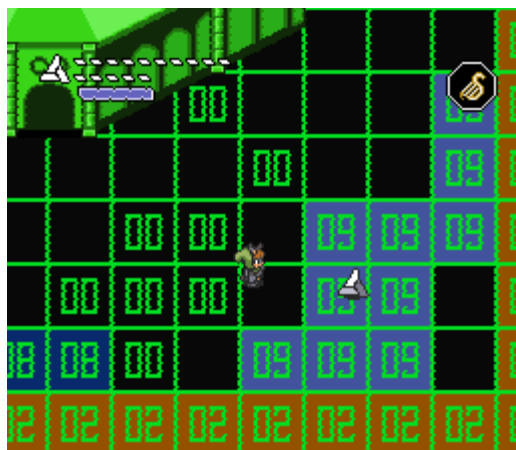
18- Area 32 (Retro Dungeon - Duck Cunt)



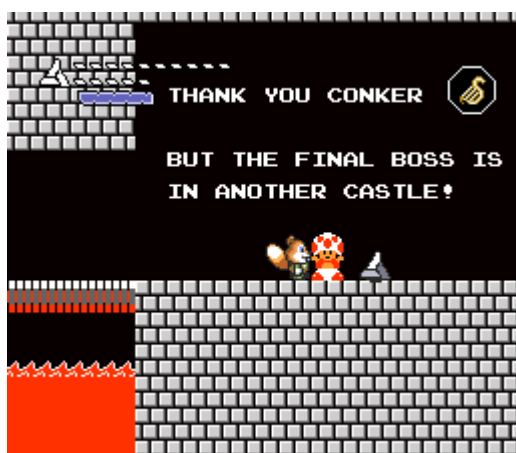
18- Area 3A (Simpsons, use Superbomb to open the garage)



18- Area 3C (Retro Dungeon - Atari, fall into hole)



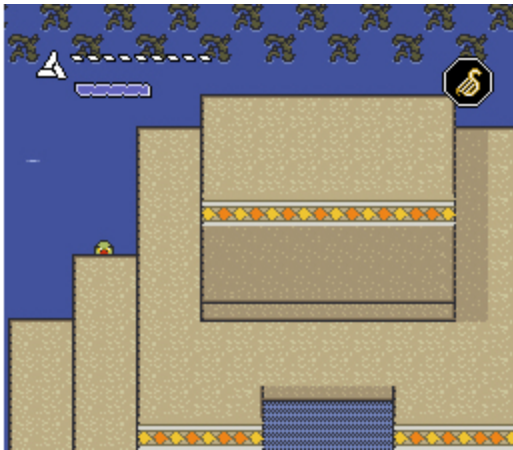
18- Area 3F (The Source)



19- Area 25 (Mario Bros 1) - flute point #4



19- Area 04 (NHL) - flute point #7



19- Area 3D (Ancient Hyrule, hidden behind the water temple)



19- Area 2E (Stargate, use gold scale to reach it (dive through whirlpool))



20- Digging Area 1F - Outside Triforce Shrine



20- Digging Area 2A - Space Garden



20- Digging Area 35 - Ancient Hyrule



20- Digging Area 37 - Lost Desert

Belts (aka bottles):



#1 - buy at Trixie in front of Pervy Goron Strip Club in the city



#2 - use this teleporter in Spencer Estate to meet Jill



#3 - Cloud Dungeon, hook to this plateau to find a switch making the chest with the belt appear



#4 - move block in Conn's briefcase to make the chest with the belt appear

Secret items and upgrades



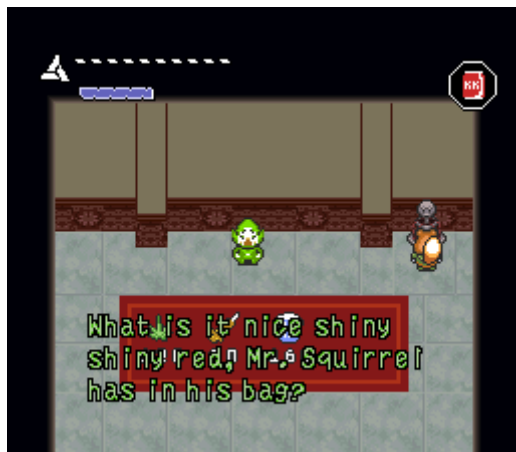
Find the black-white harp in the very first dungeon ("ultra hard puzzle") to make platforms in the Parallel Ruins visible. This harp is optional, if you missed it, there's no way to get back to D1, but the later Magic Harp has the same effect. With some practice you can figure out the platforms without the harp, and all rooms where it can be used are optional for HC pieces.



The Galaxy Book "Don't Panic" has next to the Y-Button use (Ether) also the X-Button use. Read it to the end and both pathways in the Lost Desert are written to your notepad!



The Ice Bolt can freeze water and remove those water blocks in your way to reach the Triforce Shrine.



Tingle 1 (city) - give Koka Kola from Royal Weed Factory to the Koka Kola Fountain for Fairy Dust



Star sculpture (Peach Castle) - sprinkle Fairy Dust for 2nd Magic Meter (Pure Dust, yellow meter)



Chuck1 (cloud) - throw Slingshot for Eden Crossbow



Chuck1 (cloud) - throw Dynamite for Superbomb



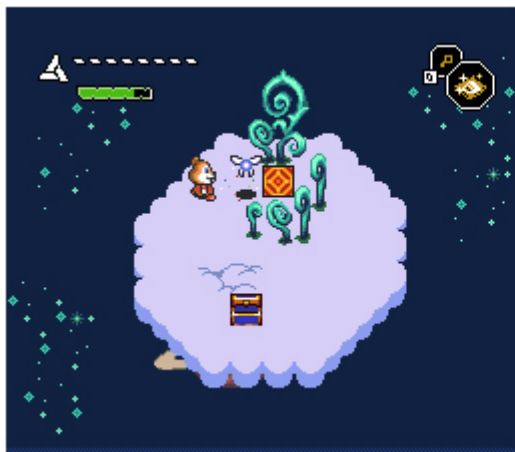
Chuck1 (cloud) - throw Fairy Dust after 2nd Magic Meter upgrade for 3rd Magic Meter (Meth Dust, blue meter)



Chuck2 (desert whirlpool) - throw any sword for spin2 (turbo spin)



Chuck2 (desert whirlpool) - throw silver scale for golden scale



Tingle 2 (cloud, reach him by sprinkling Fairy Dust on the blocking first Tingle) - have spin2 (chuck2 upgrade) for Apple of Eden (spin3)

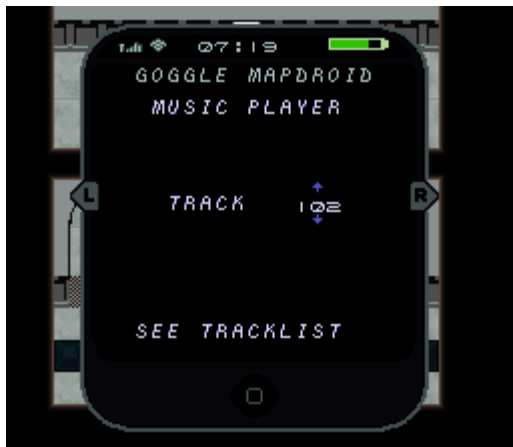
Secrets and Easter Eggs:

Make Ganon visible:



Press and hold the X-button at Ganon to see where he warps to

Easter Eggs in Dev's hideout:



MSU1-player in Conn's Briefcase (only if MSU-1 is detected).



PW2 reference in Euclid's DOS:

Town:



Wanna know what's going on in Pervy Goron Stripclub? Take a peak through this window.



Catch a fish behind the Hylian Royal Weed Factory and bring it to Trixie, she will buy it.



Use the Lifebelt at Trixie and she gives you 200 bucks. However the use will cost you 300, but if you are short on money and need a remaining golden bee...

Lost Woods and Lost Beach pathways:

Lost Woods

Find Dungeon 1 - in your Menu Notebook after following the white rabbit:

R, L, R

Shortcut to Ganon - in your Menu Notebook after talking to The Source:

U, L, D, R, U, L, D, U

Note: you can break the Master Sword barrier with the hammer or any sword - if you have Eden Crossbow in your inventory.

Lost Beach

Triforce Shrine - in your Menu Notepad after reading the Galaxy Book (X-Button):

U, L, D, L, R, U

The Source - in your Menu Notepad after reading the Galaxy Book (X-Button):

D, U, L, R, D, U, D

All endings:

End1: batcave closed - use the lost woods shortcut to Ganon (before completing Dungeon with the Tardis key, don't have apple of Eden)

End2: batcave closed - use the lost woods shortcut to Ganon (before completing Dungeon with the Tardis key, have bought apple of Eden at Cloud Dungeon Tingle)

End3: batcave open (completed Dungeon with the Tardis key), don't have all 20 rings

End4: batcave open (completed Dungeon with the Tardis key), have all 20 rings, don't have red lightsaber

End5: batcave open (completed Dungeon with the Tardis key), have all 20 rings, have red lightsaber